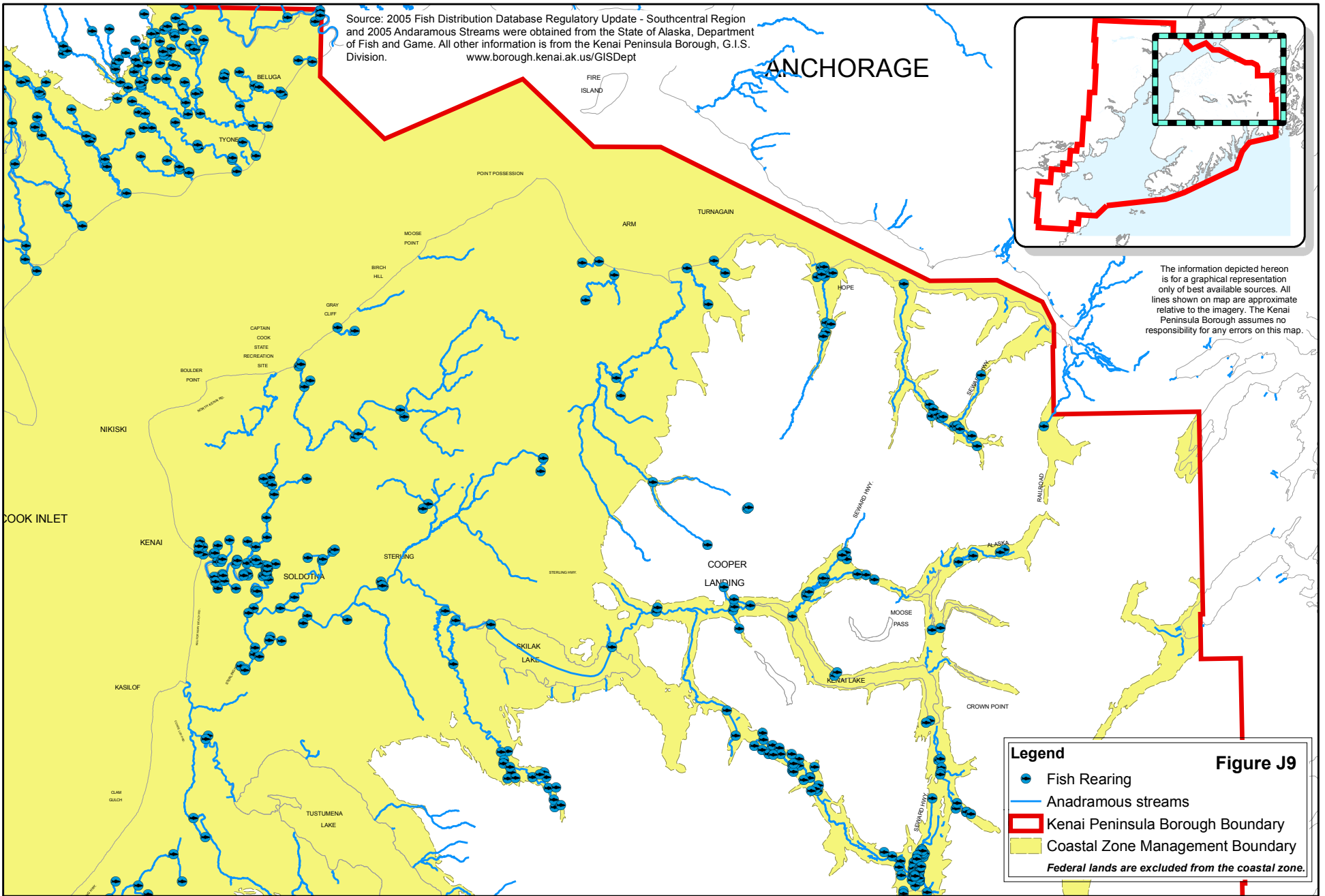


Source: 2005 Fish Distribution Database Regulatory Update - Southcentral Region and 2005 Andaramous Streams were obtained from the State of Alaska, Department of Fish and Game. All other information is from the Kenai Peninsula Borough, G.I.S. Division. [www.borough.kenai.ak.us/GISDept](http://www.borough.kenai.ak.us/GISDept)



The information depicted hereon is for a graphical representation only of best available sources. All lines shown on map are approximate relative to the imagery. The Kenai Peninsula Borough assumes no responsibility for any errors on this map.

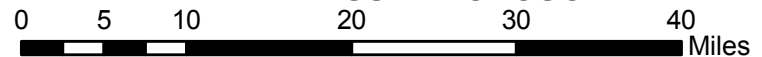
**Legend**

- Fish Rearing
- Andaramous streams
- Kenai Peninsula Borough Boundary
- Coastal Zone Management Boundary

*Federal lands are excluded from the coastal zone.*

**Figure J9**

## REARING OF FISH IN THE NORTHEAST PORTION OF THE KENAI PENINSULA BOROUGH



Funding for this publication was provided by the Alaska Coastal Management Program under the Coastal Zone Management Act of 1972, as amended in 1990 and 1996, administered by the Office of Ocean and Coastal Resource Management, National Oceanic and Atmospheric Administration, U.S. Department of Commerce.



DATE: FEBRUARY 8, 2006